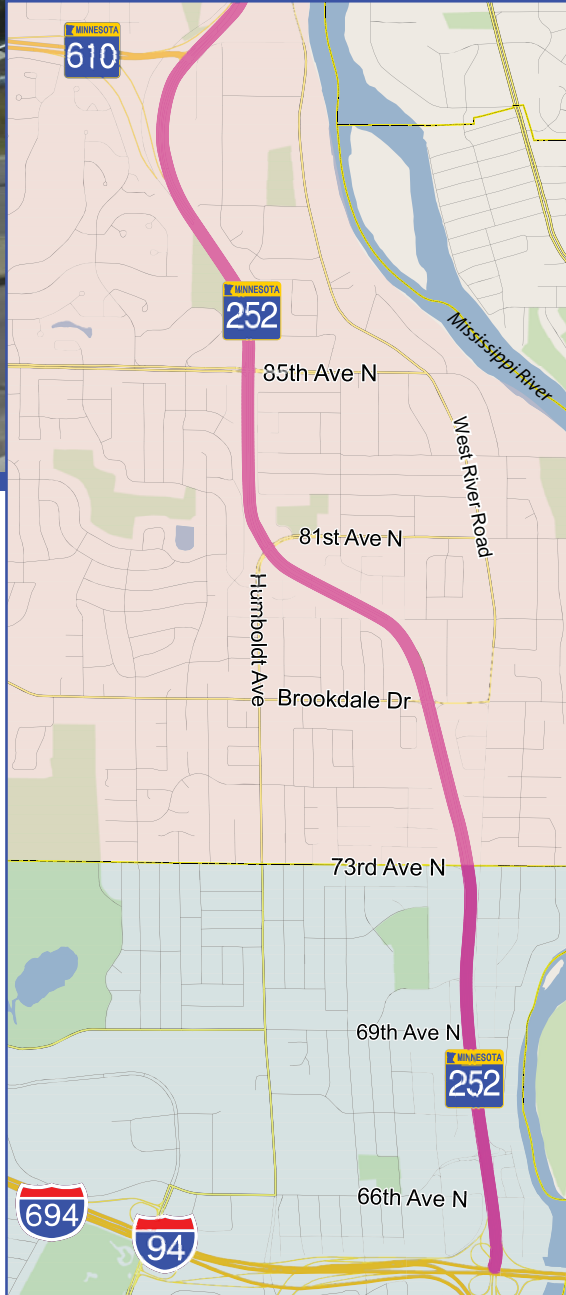

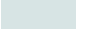





Corridor Study Newsletter



-  - Study Area
-  - Brooklyn Center
-  - Brooklyn Park

TH 252 Corridor Study
Open House

Date: **Wednesday, May 21, 2014**
 Time: **5:30 p.m. to 7:00 p.m.**
(Short presentation at 6:00 p.m.)

Brooklyn Center City Hall
 6301 Shingle Creek Parkway
 Brooklyn Center, MN 55430

About the Trunk Highway 252 Corridor Study

Trunk Highway (TH) 252 is an important north-south roadway connecting I-94/694 and TH 610, in the Cities of Brooklyn Center and Brooklyn Park. The City of Brooklyn Center is leading this study to address motor vehicle, pedestrian and bicycle safety, congestion, and connectivity concerns in the corridor. The study will guide future studies and improvements to TH 252. Study partners include the City of Brooklyn Park, Metropolitan Council, Metro Transit, and the Minnesota Department of Transportation (MnDOT). The study began in March 2014 and will continue through September 2014.

Project Partners





Study Goals and Objectives

The following goals and objectives have been identified to guide the TH 252 Corridor Study:

Goals

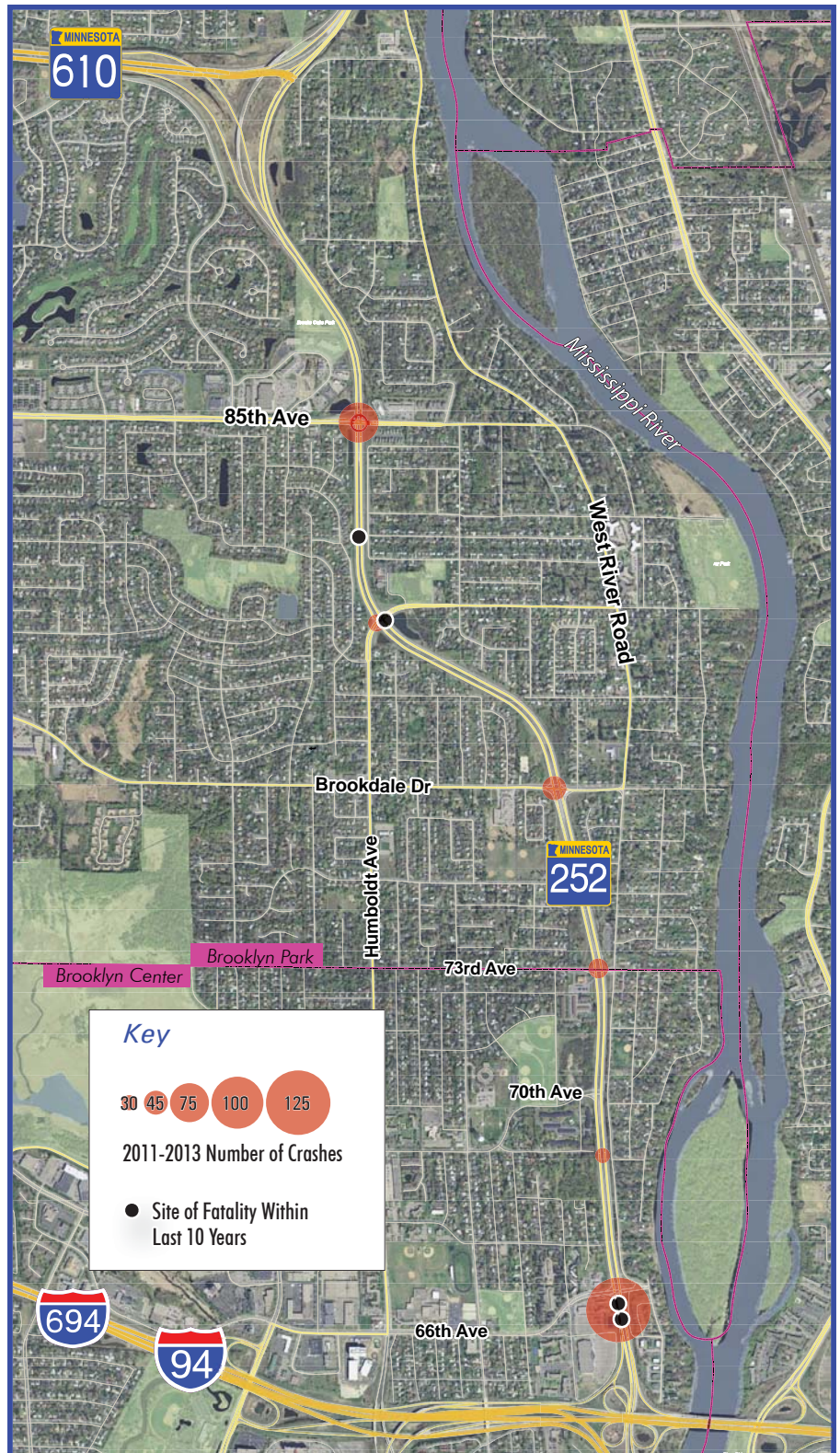
- Establish the long-term vision for TH 252
- Identify interim improvements to address existing congestion, safety, and neighborhood connectivity issues at the three intersections in Brooklyn Center (66th, 70th, and 73rd Avenues)

Objectives

- Identify expressway or freeway options for future vision
- Identify interim safety improvements
- Recommend interim mobility improvements
- Identify improvements for pedestrian and bicycle crossings
- Document proposed transit improvements
- Recommend projects for future competitive federal funding programs
- Develop recommendations for implementing interim and long-term improvements

Congestion on TH 252:

TH 252 is a congested corridor, especially during the morning and evening rush hours. Traffic delays mean that people sometimes sit through multiple traffic signals in order to get through the signalized intersections. This is especially true for motorists and pedestrians/bicyclists trying to cross TH 252. Currently an average of 53,000 to 69,000 vehicles uses TH 252 every day. In the future this number is expected to reach up to 79,000 vehicles, which will make congestion even worse. Additional information on congestion within the corridor will be available at the open house meeting.



Safety Concerns on TH 252

Safety is a critical component of the TH 252 Corridor Study. The project team has reviewed crash data to understand safety issues in the corridor. The greatest safety problems occur at the intersections with 66th Avenue in Brooklyn Center and 85th Avenue in Brooklyn Park. Both intersections have higher than average crash rates. The severity of crashes at these intersections is also higher than expected. There have been a total of 4 fatal crashes since 2003. Additional information on safety along the corridor will be provided at the open house meeting.



Study Schedule and Process

The TH 252 Corridor Study is expected to take approximately six months. A Technical Advisory Committee has been established consisting of staff from all partner agencies in the study: City of Brooklyn Center, City of Brooklyn Park, the Metropolitan Council, Metro Transit, and MnDOT. There will be opportunities for input this open house and at a future open house tentatively identified for August. The following schedule details the corridor study process:

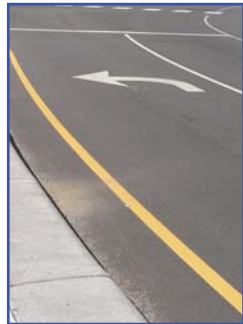
March – May 2014	<ul style="list-style-type: none"> • Study begins • Data collection • Open House
June – July 2014	<ul style="list-style-type: none"> • Develop concepts for interim corridor improvements, transit, and community connectedness
August – September 2014	<ul style="list-style-type: none"> • Cost estimates and implementation recommendations • Present recommendations to public • Open House



What types of improvements will be considered in the study?

The TH 252 Corridor Study is focused on recommending interim improvements to the corridor. The study will recommend improvements that can be constructed in the short- to mid-term to address safety, congestion, and connectivity concerns. The following improvements will be considered during the study:

- Additional turn/through lanes
- Restrictions in access
- Grade separation of selected movements
- Grade separated pedestrian/bicycle crossings and other crossing improvements
- Signal improvements
- Transit improvements and enhancements
- Non-traditional intersections



Contact information

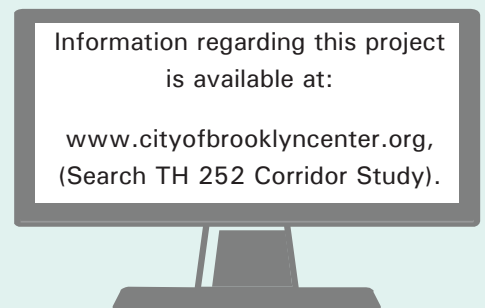
If you have comments or questions about the study, the City of Brooklyn Center encourages you to contact:

Steve Lillehaug
 Project Manager, Public Works Director/City Engineer
 763-569-3340
 publicworks@ci.brooklyn-center.mn.us

Project Website

Information regarding this project is available at:

www.cityofbrooklyncenter.org,
 (Search TH 252 Corridor Study).



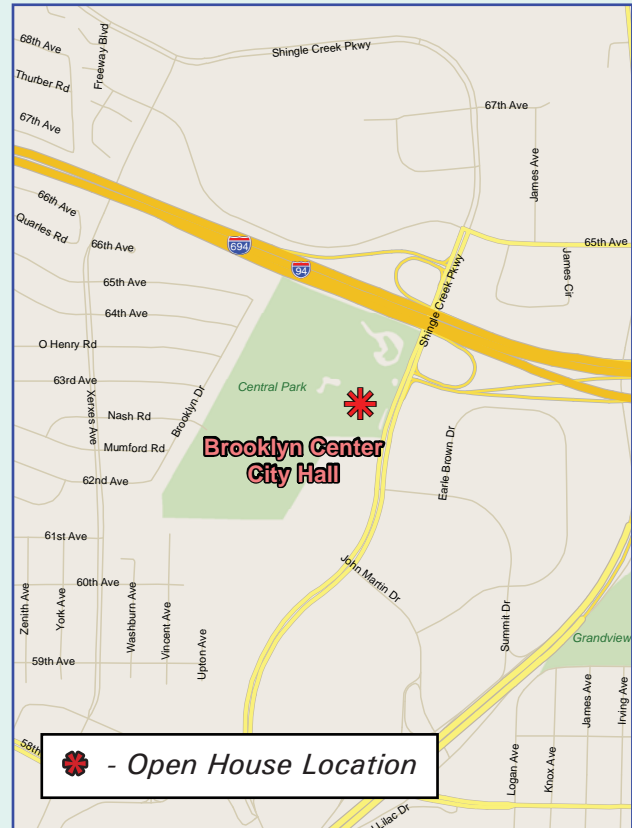


Open House #1: May 21, 2014

The City of Brooklyn Center is hosting a project open house to provide information and gather input from residents, business owners, and people who travel in and across the corridor. At the open house, you will be able to:

- Review the study process and schedule
- Learn about existing safety and congestion problems in the corridor
- Identify existing concerns and issues along the corridor and share your ideas for potential solutions
- Ask questions about the study

This is an informal open house meeting. A short presentation will begin at 6:00 p.m. Your input is important to ensure the study team understands the issues along TH 252. The project team will be available to discuss the project and listen to your concerns. Maps and more information will be available for your review.



TH 252 Corridor Study Open House

Date: **Wednesday, May 21, 2014**

Time: **5:30 p.m. to 7:00 p.m.**

(Short presentation at 6:00 p.m.)

Brooklyn Center City Hall

6301 Shingle Creek Parkway

Brooklyn Center, MN 55430