

CONCEPT

A

66th Interchange and Partial Access to 73rd Avenue

Legend

3750 - Existing ADT (2011-2015)
 3930 - 2040 ADT Source: MnDOT

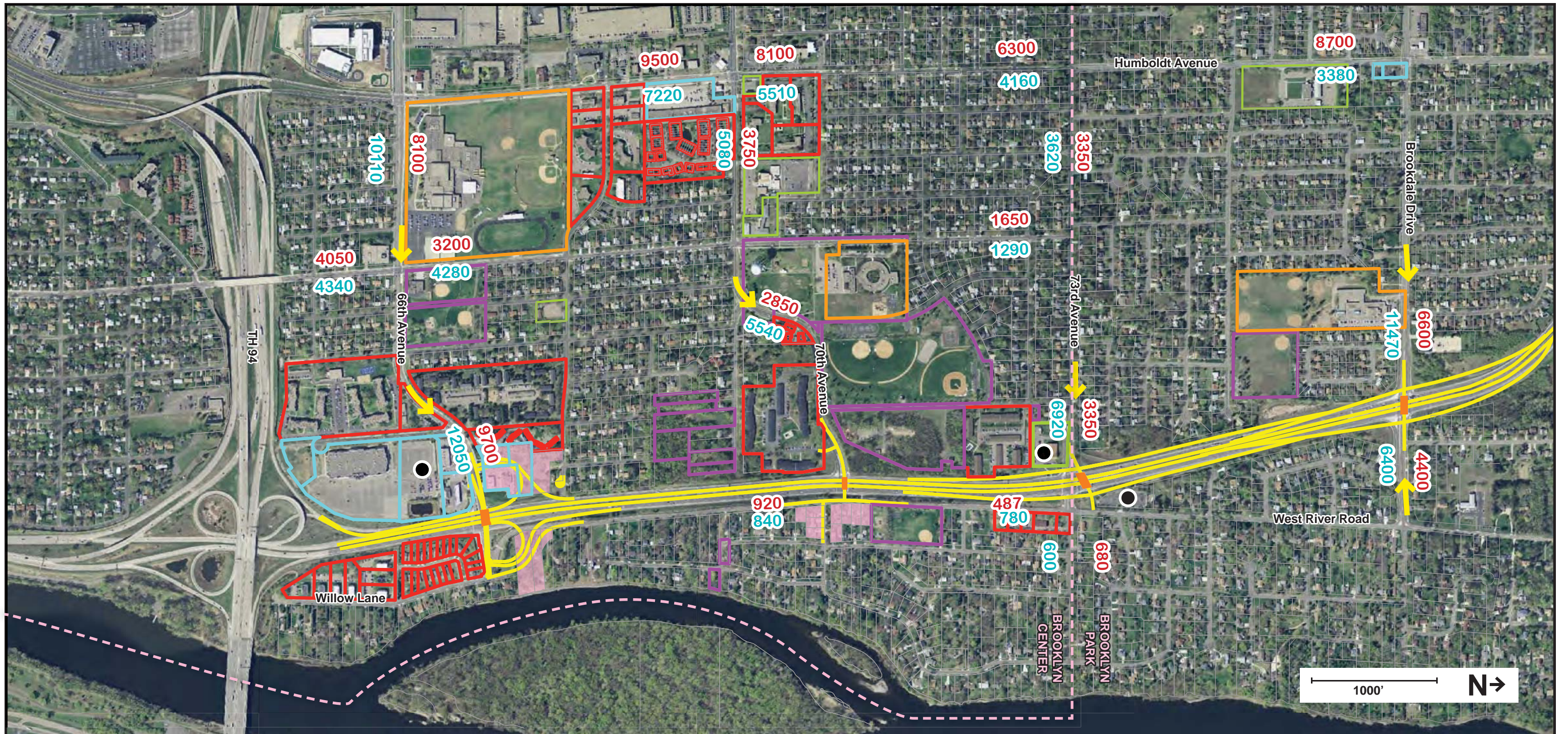
- City Boundary
- Increase in Traffic
- ROW Acquisition
- Church
- School
- City Owned Property
- Commerical
- Multi-Family Residential
- Park and Ride Lot

Benefits

- Safe bike and pedestrian crossings of TH 252 at 66th, 70th and 73rd (on bridges)
- Safe vehicle access to TH 252 at 66th and 73rd
- Minimal change in traffic patterns in residential neighborhoods
- Maintains existing access to TH 252 for commercial properties
- Space available to provide screening of highway for residential properties.

Impacts

- Requires acquisition of 2-3 properties east of TH 252 and 4 properties west of TH 252
- 70th Avenue traffic access to TH 252 would be rerouted to 65th/66th and 73rd Avenues for access to TH 252
- No northbound TH 252 access at 73rd Avenue



CONCEPT

B

66th Street Interchange and Split Diamond 73rd Avenue and Brookdale Drive

Legend

3750 - Existing ADT (2011-2015)
3930 - 2040 ADT Source: MnDOT

--- - City Boundary
→ - Increase in Traffic
■ - ROW Acquisition

■ - Church
■ - School
■ - City Owned Property

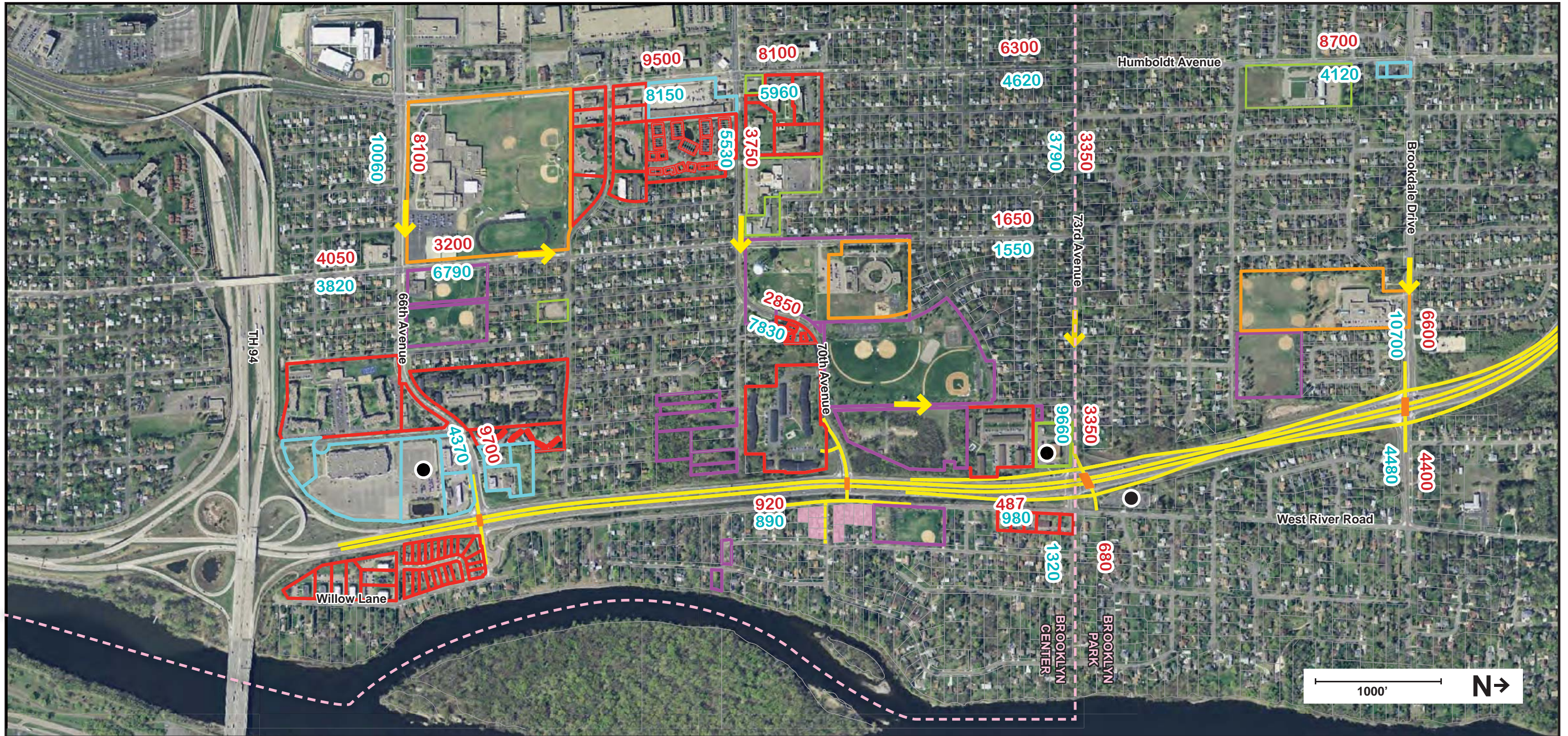
■ - Commercial
■ - Multi-Family Residential
● - Park and Ride Lot

Benefits

- Safe bike and pedestrian crossings of TH 252 at 66th, 70th and 73rd (on bridges)
- Safe vehicle access to TH 252 at 66th and 73rd
- Minimal change in traffic patterns in residential neighborhoods
- Maintains existing access to TH 252 for commercial properties
- Space available to provide screening of highway for residential properties.
- Frontage road access at 73rd to full interchange access to northbound TH 252 and from southbound TH 252

Impacts

- Requires acquisition of 11-12 properties east of TH 252 and 4 properties west of TH 252
- 70th Avenue traffic access to TH 252 would be rerouted to 65th/66th and 73rd Avenues for access to TH 252
- Additional bridge cost



CONCEPT

D

73rd Avenue Interchange

Legend

3750 - Existing ADT (2011-2015)
 3930 - 2040 ADT Source: MnDOT

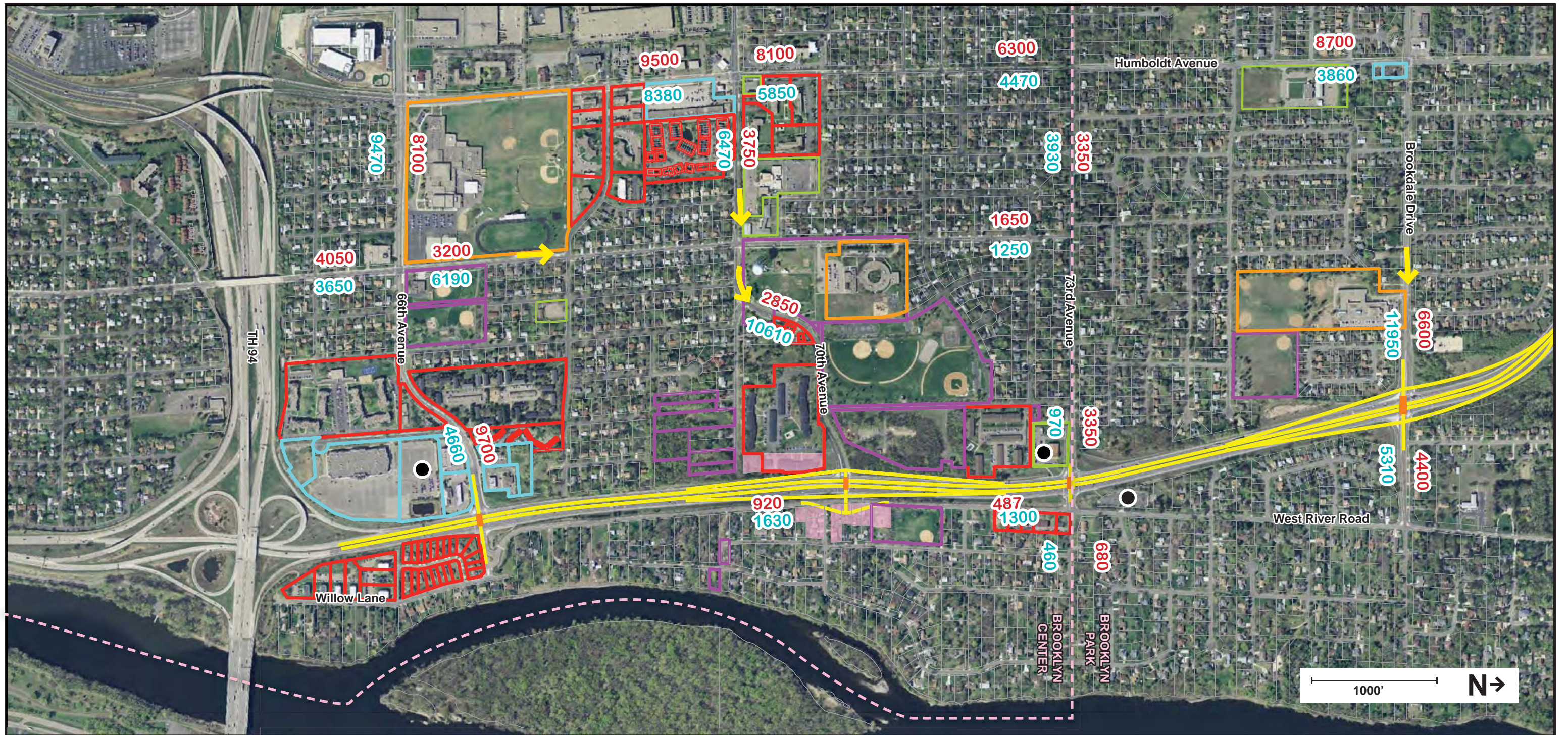
- City Boundary
- Increase in Traffic
- ROW Acquisition
- Church
- School
- City Owned Property
- Commerical
- Multi-Family Residential
- Park and Ride Lot

Benefits

- Safe pedestrian and bicycle access across TH 252 at 66th, 70th and 73rd (on bridges)
- Safe vehicle access across and to TH 252 at 70th

Impacts

- Requires acquisition of 9 properties east of TH 252 and no properties west of TH 252. Additional roadway easements would also need to be acquired for potential 70th Avenue and 73rd Avenue Improvements.
- Significant change in traffic patterns – more traffic on West River Rd and 70th Avenue, and on neighborhood residential streets leading to 70th Avenue.
- Need to widen 70th Avenue and 73rd Avenue to accommodate increase in traffic
- Loss of access to TH 252 for commercial properties
- Change of Camden Avenue with increase in traffic to collector



CONCEPT

F

70th Avenue Interchange

Legend

3750 - Existing ADT (2011-2015)
 3930 - 2040 ADT Source: MnDOT

- City Boundary
- Increase in Traffic
- ROW Acquisition
- Church
- School
- City Owned Property
- Commercial
- Multi-Family Residential
- Park and Ride Lot

Benefits

- Safe pedestrian and bicycle access across TH 252 at 66th, 70th and 73rd (on bridges)
- Safe vehicle access across and to TH 252 at 70th Avenue

Impacts

- Requires acquisition of 9-10 properties east of TH 252 and 1 partial property west of TH 252. Additional roadway easements would also need to be acquired for potential 70th Avenue Improvements.
- Significant change in traffic patterns – more traffic on West River Rd and 70th Avenue, and on neighborhood residential streets leading to 70th Avenue.
- Need to widen 70th Avenue to accommodate increase in traffic
- Loss of access to TH 252 for commercial properties and high density residential properties along 66th. The viability of the commercial properties would be challenging, potentially requiring additional access improvements, west frontage road, etc.