

# Brooklyn Boulevard Corridor Study

The City of Brooklyn Center in partnership with Hennepin County, Three Rivers Park District, Minnesota Department of Transportation, and Metro Transit.



## OPEN HOUSE

June 19, 2012

# Study Overview

- Purpose – develop long term vision for the Brooklyn Boulevard corridor, including:
  - Roads
  - Bike and pedestrian facilities
  - Transit
  - Streetscaping
  - Redevelopment properties
  - Medians and driveways

# Vision and Goals

- Revitalize the corridor by improving the transportation functions of the road and improving visual appeal
- Ensure a safe and efficient road for all users
- Encourage walking, biking, and transit use by improving facilities and crossings
- Improve the traffic operation and safety
- Identify redevelopment strategies

# What issues will the concept address?

- Lack of pedestrian and bike friendly sidewalks, trails, and streetscaping
- Long stretches with no crosswalks available
- Single family homes not compatible with the character of the corridor in the long term
- Too many driveways directly on a high volume street
- Lack of consistent visual character



**Question: Do you walk or bike in the corridor?  
If yes, what issues do you see? If not, why?**

# What does “long term” vision mean?

- Future concept described here is a long term concept, and no funding is currently identified
- Sets a long term plan to guide future improvements and help secure funding
- Concept will likely be constructed in pieces as funding is secured
- Some portions have interim and long term improvements to be completed as properties redevelop or property owners are willing to sell

# Future Concept Overview

- Improved function of road – safer and more efficient
- Complete streets – more bike, pedestrian, and transit friendly
- Long term concept for a revitalized Brooklyn Boulevard
- Timing is right as surrounding roads are reconstructed and Brookdale redevelops
- **Question: What improvements would help support walking, biking, and transit use in the corridor?**

# Future Concept Overview

The future concept includes:

- Four lane road north of Highway 100 with center median added where feasible
- Two options for area south of Highway 100 – four lane or two lanes with center turn lane
- Adding sidewalk and off street trail throughout
- Studying additional on street bike facility
- Adding landscaped boulevard (buffer between road and sidewalk) throughout
- Turn lane adjustments

# Future Concept – South of Highway 100

- Similar to existing road – options for four lane road or two lanes with center turn lane and shoulders
- Adding boulevards with additional trees as a buffer between sidewalk and street
- Additional bike facilities (on street bike lane) under study, to connect to facilities in Minneapolis



Example of two lane road with center turn lane, addition of boulevards, and wider trail on one side



# Future Concept - City Center

- Area near Shingle Creek Crossing (formerly Brookdale Center)
- Major entry into Brooklyn Center from Highway 100
- Adding median design elements and streetscaping elements to establish character
- Regional Trail crossing at 55<sup>th</sup> Avenue – improved crosswalk



Example of median with bollards and signs – Eden Prairie

# Future Concept - Bass Lake Road Area

- Opportunity to build on recent Bass Lake Road project
- Establish continuity of visual character
- Improve bike/pedestrian crossing



Sketch of streetscaping elements for Bass Lake Road intersection

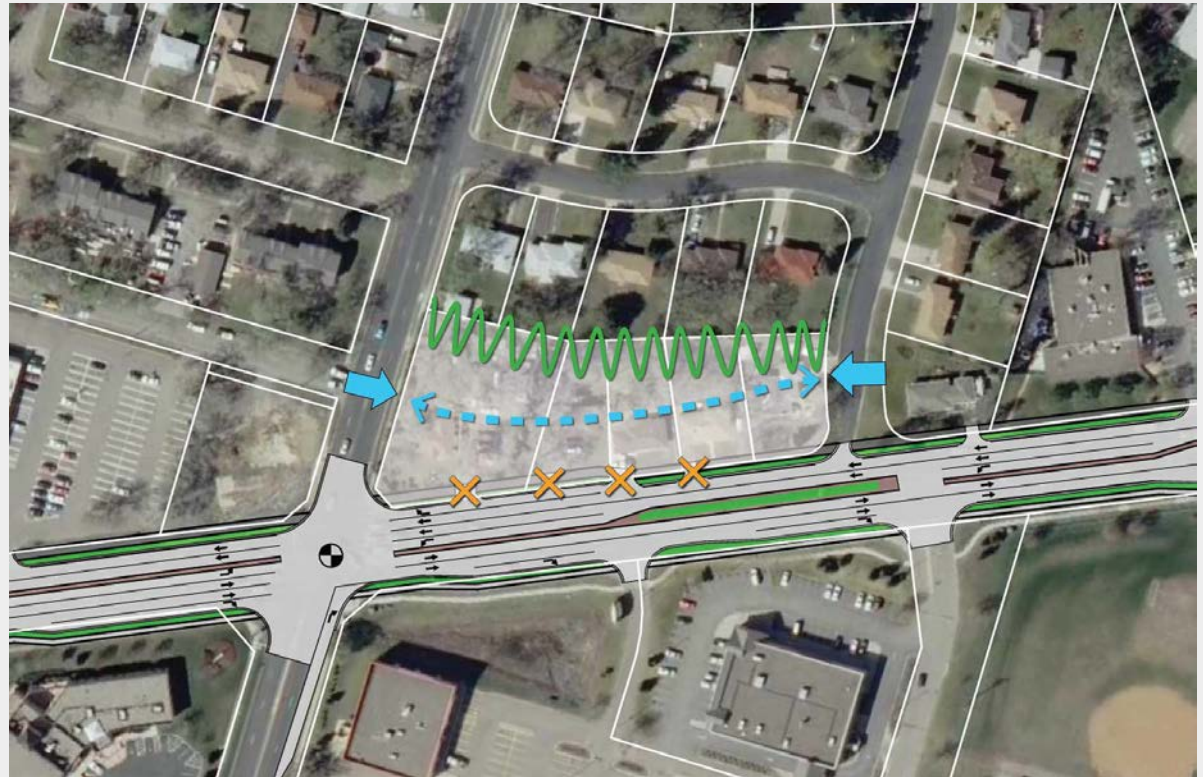
# Future Concept - North End

- Construct median to improve safety and road function
- Closing driveways when possible as properties redevelop
- Adding turn lanes in select locations
- Improve crossings for bikes and pedestrians



# Redevelopment Concepts

- Alternatives under consideration for City-owned parcels
- Also studying alternative uses for key residential parcels for willing sellers



# We need your input!

- Do you have any concerns about how the road currently functions for vehicle traffic?
- Where would improved pedestrian connections or other amenities help encourage transit use?
- As a pedestrian, what concerns do you have related to walking in the corridor?
- Are you comfortable biking along the corridor as it is today? What changes would encourage you to bike more?

# We need your input!

- The future concept includes an off street trail throughout the corridor. Is an on street facility needed in addition for bike commuters?
- Where are pedestrian connections needed (east-west) across the corridor? What destinations currently have inadequate access on foot?

# Thank you!



We welcome your input  
using the comment cards,  
or contact us after the  
meeting at:

[publicworks@ci.brooklyn-center.mn](mailto:publicworks@ci.brooklyn-center.mn)